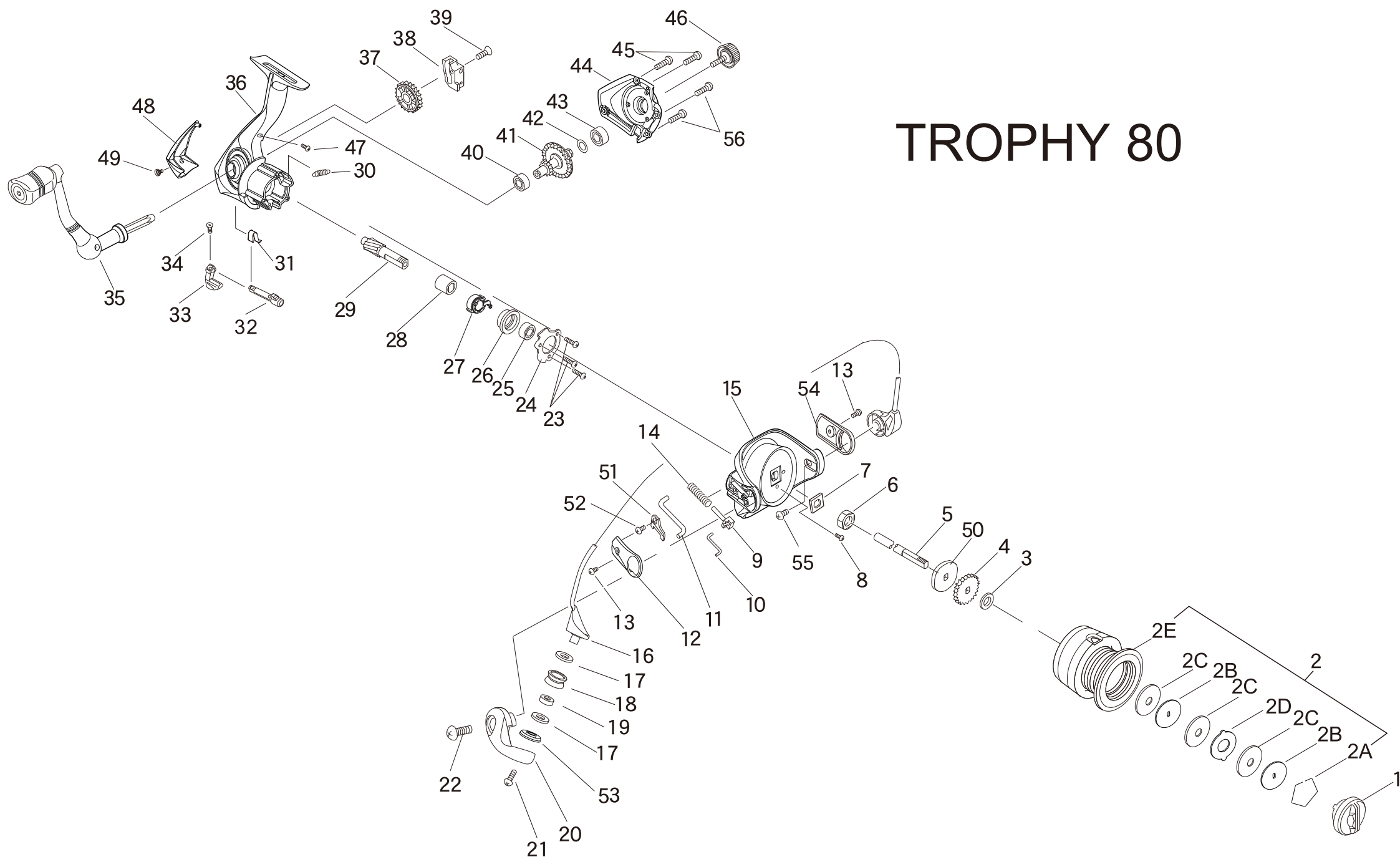


# ■ EXPLODED VIEW



## TROPHY 80

## FINNOR TROPHY 80

Key No.	Description	Part No.	Q'TY	Key No.	Description	Part No.	Q'TY
		FNTY80				FNTY80	
1	DRAG KNOB ASSEMBLY	QAF332-01	1	27	ANTI-REVERSE BEARING	QAF063-01	1
2	SPOOL KIT INCLUDE	QAF421-01	1	28	INNER RING	QAF139-01	1
	2A - RETAINING RING	QAF038-01	1	29	PINION GEAR	QAF011-01	1
	2B - DRAG WASHER "D"	QAF081-01	2	30	One Way Clutch Spring	QAF107-01	1
	2C - DRAG WASHER "B"	QAF030-01	3	31	ANTI-REVERSE SPRING	LAF089-01	1
	2D - DRAG WASHER "A"	QAF080-01	1	32	ANTI-REVERSE CAM	QAF090-01	1
	2E - SPOOL ASSEMBLY	QAF321-01	1	33	ANTI-REVERSE LEVER	LAF059-01	1
3	CLICK WASHER	QAF167-01	1	34	ANTI-REVERSE LEVER SCERW	LAF232-01	1
4	CLICK	QAF225-01	1	35	HANDLE ASSEMBLY	QAF318-01	1
5	MAIN SHAFT	QAF015-01	1	36	BODY ASSEMBLY	QAF301-01	1
6	NUT	QAF006-01	1	37	O/S GEAR	QAF053-01	1
7	NUT WASHER	QAF065-01	1	38	OSCILLATOR	QAF025-01	1
8	NUT SCREW	QAF113-01	1	39	SCREW-OSCILLATOR	QAF111-01	1
9	SLIDER	QAF020-01	1	40	BALL BEARING-BODY	QAF058-01	1
10	LINK	QAF035-01	1	41	DRIVE GEAR	QAF012-01	1
11	KICK LEVER	QAF019-01	1	42	WASHER-DRIVE GEAR	QAF290-01	1
12	COVER A	QAF087-01	1	43	BALL BEARING-BODY COVER	CP058-01	1
13	COVER SCREW	QAF120-01	2	44	BODY COVER ASSEMBLY	QAF323-01	1
14	DEAD POINT SPRING	QAF044-01	1	45	SCREW-BODY COVER	QAF057-01	2
15	ROTOR	QAF009-01	1	46	HANDLE CAP	QAF073-01	1
16	BAIL ASSEMBLY	QAF347-01	1	47	SCREW-BACK COVER	QAF168-01	1
17	LINE ROLLER WASHER	QAF203-01	2	48	BODY BACK COVER	QAF250-01	1
18	LINE ROLLER	QAF004-01	1	49	SCREW-BACK COVER	LAF168-01	1
19	BALL BEARING	CT157-01	1	50	CLICK WASHER	QAF109-01	1
20	BAIL ARM LEVER	QAF007-01	1	51	PRESSURE PLATE	QAF267-01	1
21	LINE ROLLER SCREW	LAF108-01	1	52	SCREW	QAF051-01	1
22	BAIL ARM LEVER SCREW	QAF051-01	2	53	LINE ROLLER WASHER	QAF203-01	1
23	BEARING SUPPORT SCREW	QAF120-01	3	54	COVER B	QAF087-02	1
24	BEARING SUPPORT	QAF118-01	1	55	SCREW	QAF115-01	1
25	BALL BEARING	CP058-01	1	56	SCREW-BODY COVER	QAF057-02	2
26	BALL BEARING HOLDER	QAF135-01	1				